

REINHARDT

System- und Messelectronic GmbH

- In-circuit test systems
- Function test systems
- Boundary Scan test
- Multi-function test
- Fixture production system
- Test fixtures
- Environment sensors



ATS-MFT 770



ATS-UKMFT with Tandem Module



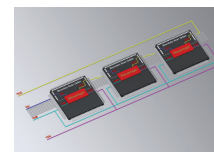
ATS-UKMFT 616 Multi-Function Tester WIN®-software, 32 in-circuit-function test channels, expand. to 224 channels, incl. 5 fixed voltages and

2 prog. twin-PSUs, sine-square wave generator, 32 stimulus channels, 32 logic channels, measuring unit, statistics evaluation software, automatic program generators, autolearn, without computer and fixture.



ATS-UKMFT 727 Multi-Function Tester WIN®-software, 128 in-circuit-function test channels, expand. to 608 channels, incl. 5 fixed voltages and

4 prog. PSUs, sine-square wave generator, 32 stimulus channels, 32 logic channels, measuring unit, statistics evaluation software, automatic program generators, autolearn, with fixture, without computer



RBS100 REINHARDT Boundary Scan Test and Edit Module for REINHARDT-test systems detects interrupts and short circuits between Bound-

ary Scan-components and via REINHARDT-logic channels also at open outputs, JTAG-programmer incl.; requires ATSGERB for graphical display of fault location



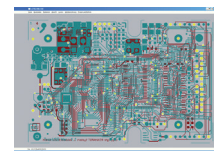
ATS-MFT770M-1/B Multi-Function Tester WIN®-software, 6 prog. PSUs, 96 in-circuit-function test channels, exp. to 1,440/4,320 channels, 96

logic channels, USB, SPI, I2C, RS232/422/485, PWM, sine-square wave generator, stimulus matrix, measuring unit, statistics, APG, autolearn for in-circuit- and function software. Desk/cabinet/ fixture optional



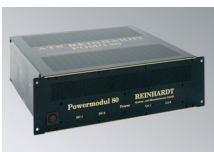
ATS-SMFT 780 Multi-Function Tester, Cabinet 480 in-circuit-function test channels, expandable to 2,400/3,840 channels, incl. 6 prog. PSUs, sine-

and square wave generator, stimulus matrix, power matrix, high voltage matrix, 32 logic channels, transient recorder, measuring unit, USB, SPI, I2C, RS232/422/485, PWM, CAD-import, APG, autolearn, fixture



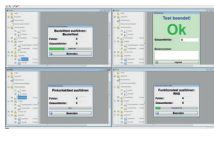
ATSGERBII Software – on-screen display of the fault location on the test item such as pin contact and net faults, short-

circuits, component faults and graphic information (e.g. Bitmap), software for calculating the Gerber files, creating the fixture drilling files for building the fixture and of graphic information



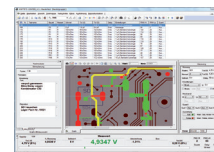
POMO80 Power Module with 1 DC-source max. 80V, 14A, 2 loads max. 100V, 30A, 1mA, total power up to 1,000W, RS232-interface, ramp

and curve functions can be edited, true values can be re-read, various expansions with changing number of DC-sources or loads



RST40 REINHARDT Synchro Test Software package (single licence for 4 clients – client-server operation) for network-based remote

control, control and parallel operation of up to 4 REINHARDT-test systems (more are optional)



RDR Off-line Repair Station for repair, with precise graphical display of faults, use of the statistics data by module

identification, fault location and repair station software under WINDOWS, without PC and without monitor



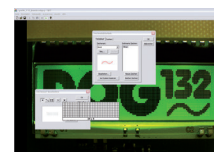
System Diagnose In-circuit-Function Test Hard- and software for testing the system range automatically. In case of fault the defective module

can be isolated; instructions for adjusting the various stimulus and measuring parameters; incl. calibration certificate approved to ISO 9000



RUDC10 Universal Data Converter (CAD-interface) for REINHARDT-Windows-test systems for import of components data and coordinates of

R, L, C, ZD, D, NPN, PNP, PFET, NFET, for fast creation of an in-circuit test program incl. graphical display of fault location, requires ATSGERB-software

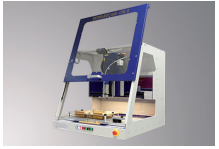


ODT Optical Display Test – System for automatic evaluation of displays, gas discharge displays, dot-matrix, seven segment, LED, OLED, LCD, incl. software for eval-

uating displays WINDOWS®, auto-adjustment, 0.4 s per evaluation, high-resolution USB-camera, lens incl., (no PC)

REINHARDT

System- und Messelectronic GmbH



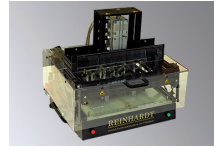
Fixture Production System for building REINHARDT-test fixtures semi-automatically, incl. XYZ-table, drilling machine hard- and software

for controlling the table, drills, 3 magazines hold 3 types of contact pins (550 contact pins 100 mil, 75 contact pins 75 mil) with receptacles, protective cover, without ATSGERB-software and without PC



Manual Fixture Type 42A, 4 linear guidings, hinged upper part, exchange plate (CEM1), working area 360 x 230 mm, overall

dimensions of the plate 380x297x8 mm, upper exchangeable retention box incl. 15 retention pins, shift 27 mm, double-sided contacting, dual stage, also for double-sided loaded PCBs, up to 1,000 spring contact pins



Pneumatic Fixture Type 40A, 4 linear guidings, with voltage supply, dual stage retention (in-circuit- and function test), with exchange plate

(FR4), working area 360x230 mm, overall dimensions of the plate 380 x 297 x 8 mm, exchangeable retention box incl. 15 retention pins, shift 27 mm, double-sided contacting, up to 1,000 spring contact pins



Manual Test Fixture Type 42C 4 linear guidings, 2 x 18VG-interface, exchange plate (CEM1), working area 360x230mm, overall dimensions of the plate 380x297 x 8 mm, exchange

retention box, 15 retention pins 10x45mm, shift 26mm, double-sided contacting, up to 1,000 spring contact pins



Manual Test Fixture Type 82C 4 linear guidings, 2 x 18VG-interface, exchange plate (FR4), working area 480x320mm, overall dimensions of the plate 500x400x8 mm, exchange

retention box, 18 retention pins 10x45mm, shift 26mm, double-sided contacting, up to 1,000 spring contact pins



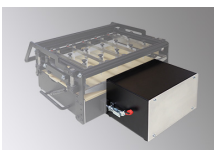
Manual Test Fixture Type 82B 4 linear guidings, 1 x 18VG-interface, exchange plate (FR4), working area 480x320mm, overall dimensions of the plate 500x400x8 mm, exchange

retention box, 18 retention pins 10x45mm, shift 26mm, double-sided contacting, up to 1,000 spring contact pins



Manual Fixture Type 147 working area 360x230mm, with lower exchange plate (CEM1), overall dimensions of the plate 380 x 297 x 8 mm,

incl. four 96way connectors, exchange retention box, 15 retention pins, double-sided contacting, also for double-sided loaded PCBs, up to 800 spring contact pins



Dockingbox ADA 127/147, one side interface with 8 female connectors, 96-way, opposite side blank pane for user-specific connectors

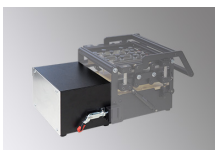
incl. 2 mounted grips for push rod for easy docking to fixture type or type 147

Dimensions: Basic rack about 165mm deep, about 230 mm wide (without grips for push rod) and about 145 mm high



Manual Test Fixture Type 127 working area 191.5x172mm, with lower exchange plate (CEM1), overall dimensions of the plate 217.6x230x8mm,

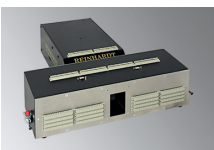
incl. two 96way connectors, exchange retention box, 12 retention pins, double-sided contacting, also for double-sided loaded PCBs, up to 500 spring contact pins



Dockingbox ADA 127, one side interface with 8 female connectors, 96-way, opposite side blank pane for user-specific connectors incl.

2 mounted grips for push rod for easy docking to fixture type 127

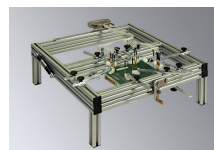
Dimensions: Basic rack about 165 mm deep, about 230 mm wide (without grips for push rod) and about 145mm high



Tandem Module – twin fixture box for mutual contacting and higher throughput, e.g. for contacting 2 fixtures Type 127 on one REINHARDT-test

system. A connection kit for 2 fixtures Type 127 is included.

About 165 mm deep, about 600 mm wide



Fixture Type UJ 20 for universal guiding and contacting of the device under test. The basic unit comes with several contacting jibs, 85 mm

and 120 mm long, which are equipped with contact pins 100 mil, with guiding edges, guiding brinks and guiding pins. One guiding edge is fixed.



SteuerMod-Inline USB integration of the ATS in inline system/production line, rail housing; ATS can be controlled and evaluated externally.

Function inputs: Start, Stop; Result: OK, Fail, Busy, ReadyStartStop, inline control USB Start/Stop box, four-fold lamp control, 8 in-, 8 outputs, USB-connection cable



Test Fixture Wire Finder TFWF 96 for individual fixture wiring, in case you have to duplicate a fixturing or want to use already existing test point

designations for the RMX-measuring matrix channels. Programmable for RMX 32, RMX 32/64 and RMX 96 as well as an A/C rotation, incl. power supply 230 VAC

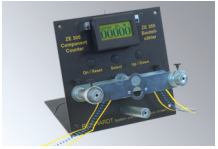


MCT 192-2 Cable and Wiring Tester 192-2 connections, connector contact board/s are optional; for testing cables, wirings, backplanes, stand-alone-

operation, search probe, USB-interface and USB interface cable for connecting a PC, USB-plug-in supply, incl. software

REINHARDT

System- und Messelectronic GmbH



ZE 300 Component Counter for radial, axial and SMD-banded components, incl. NC-rechargeable battery and charger. Independent of mains supply, microprocessor controlled, preset number of pieces and separation mark, adjustable display. Tape width of SMT-components can be set from 8 mm to 60 mm; optional RS232-interface

with RS232-data output (optional RS422, RS485, USB, TCP/IP, WLAN etc.), PC-software for display, control and evaluation, without power supply and cabling



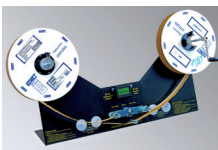
MWS 3 measures temperature, relative humidity, barometric pressure, wind speed, gust speed and wind direction, voltage supply 6–30 VDC,

with RS232-data output (optional RS422, RS485, USB, TCP/IP, WLAN etc.), PC-software for display, control and evaluation, without power supply and cabling



Combi-Sensor DFT-RE 55Y measures temperature, humidity, barometric pressure and precipitation, 200 cm² collecting area, 5 free analog

inputs, RS232-data output (optional: RS422, USB, TCP/IP, PoE, WLAN etc.), 32 GB data logger, PC-software for display, control and evaluation



ZE300 UV Reel Winder incl. ZE 300, heavy metal construction for secure foothold, mechanical, counts components on reels and winds

radial, axial and SMT-components on reels for insertion machines with a diameter of up to 680 mm and 90 mm tape width, manual



Combi-Sensor Wind WTF 55VY measures temperature, humidity, wind speed, gust speed and wind direction, 5 free analog inputs and 1 free

TTL-input, RS232-data output (optional: RS422, USB, TCP/IP, PoE, WLAN etc.), 32 GB data logger, PC-software for display, control and evaluation



Wind Speed Sensor WGS 55Y measures wind speed, average wind and gust speed, 5 free analog inputs and 1 free TTL-input, RS232-data output

(optional: RS422, USB, TCP/IP, PoE, WLAN etc.), 32 GB data logger, PC-software for display, control and evaluation, without power supply and cabling



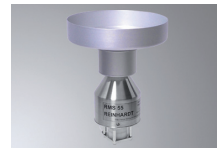
MWS 10 Microprocessor Weather Station, measures temperature, windchill, humidity, dew-point, air pressure, wind direction, wind speed,

global radiation, precipitation; 5 free analog inputs, RS232-data output, switching output (optional: RS422, USB, TCP/IP, PoE, WLAN etc.), 32 GB data logger, PC-software for display, control and evaluation



Combi-Sensor Wind WDS 55VY measures temperature, wind speed, gust speed and wind direction, 5 free analog inputs and 1 free TTL-input, RS232-data output (optional: RS422, USB, TCP/IP, PoE, WLAN etc.), 32 GB data logger, PC-software for display, control and evaluation

output (optional: RS422, USB, TCP/IP, PoE, WLAN etc.), 32 GB data logger, PC-software for display, control and evaluation



Precipitation Sensor RMS 55Y measures precipitation with a self-emptying bucket, 200 cm² collecting area, 5 free analog inputs, RS232-

data output (optional: RS422, USB, TCP/IP, PoE, WLAN etc.), 32 GB data logger, PC-software for display, control and evaluation, without power supply and cabling, heating optional



MWS 88-2Y Microprocessor Weather Station, measures temperature, humidity, barometric pressure, wind direction, wind speed, 5 free analog inputs

and 1 free TTL-input, RS232-data output (optional: RS422, USB, TCP/IP, WLAN etc.), 32 GB data logger, PC-software for display, control and evaluation



Combi-Sensor Wind WGWR 55Y measures wind speed, gust speed and wind direction, 5 free analog inputs and 1 free TTL-input, RS232-data

output (optional: RS422, USB, TCP/IP, PoE, WLAN etc.), 32 GB data logger, PC-software for display, control and evaluation



Global Radiation Sensor GSS 55Y measures solar energy (305 nm to 2800 nm) with a pyranometer, 0 to 1300 W/m², 5 free analog inputs and 1 free

TTL-input, RS232-data output (optional: RS422, USB, TCP/IP, PoE, WLAN etc.), 32 GB data logger, PC-software for display, control and evaluation, without power supply and cabling



MWS 55Y Weather Station measures temperature, humidity, barometric pressure, wind direction, wind speed, 5 free analog inputs and 1 free TTL-input, RS232-data output (optional: RS422, USB, TCP/IP, PoE, WLAN etc.), 32 GB data logger, PC-software for display, control and evaluation

output (optional: RS422, USB, TCP/IP, PoE, WLAN etc.), 32 GB data logger, PC-software for display, control and evaluation



Combi-Sensor DFT 55VY measures temperature, humidity and barometric pressure, 5 free analog inputs and 1 free TTL-input, RS232-

data output (optional: RS422, USB, TCP/IP, PoE, WLAN etc.), 32 GB data logger, PC-software for display, control and evaluation



Mobility Package for REINHARDT-Weather Stations MWS 5, MWS 55, MWS 8, MWS 88 or sensors. Watertight plastics transport box,

for holding the weather station or sensor incl. connection cable, outer dimensions: 660 mm wide, 490 mm deep, 230 mm high – comes empty, but weather station tripod is included.

REINHARDT

System- und Messelectronic GmbH



GS-ASY Analog Global Radiation Sensor measures global radiation (305 to 2,800 nm) from 0 to 1500 W/m². 76 mm long with glass hemisphere and housing, 25 mm diameter; cable connection with 3 wires (ground, supply voltage from 5V or 8–20 VDC and output signal from 0–4V).



Combi-Sensor DFT 485Y measures temperature, relative humidity, dewpoint and barometric pressure, head diameter about 60 mm, 86 mm high, power supply 6–30VDC, with RS232-data output (optional RS422 or RS485) incl. software for display, control and evaluation; without power supply and cabling



Switching outputs for control tasks in sensors of the 55 series outputs can be configured dependent on the sensor/s (1x switching contact, 1 x 5 VDC) for control tasks. The measured values of up to three sensors of the 55 series can be linked logically.



WGS 485Y Wind Speed Sensor measures wind speed 0–200 km/h, resolution 0,05 km/h, average wind, gust speed. 115 mm high, diameter anemometer 120 mm. Power supply 6–30 VDC, with RS232-data output (optional RS422 or RS485), without software, power supply and cabling.



GSS 485Y Global Radiation Sensor measures global radiation (305 to 2,800 nm) from 0 to 1,500 W/m². 73 mm high with glass hemisphere and housing, 25 mm diameter; power supply 6–30VDC, with RS232-data output (optional RS422 or RS485), without software, power supply and cabling



WWDSDigital Monitor Display Software for numerical display of the current weather data provided by MWS-weather stations and REINHARDT-climate and environmental sensors, parameters can be configured. For use in banks, lounges, reception areas etc. Without monitor and PC



Miniature Combi-Sensor WGWR 485Y measures wind speed, gust speed and wind direction, power supply 6–30VDC, with RS232-data output (optional USB, TCP/IP, WLAN, GSM) incl. software for display, control and evaluation; without power supply and cabling



HKS 485Y Global Radiation Sensor measures light intensity from 0 to 220,000 Lux. 73 mm high with glass hemisphere and housing, 25 mm diameter; power supply 6–30VDC, with RS232-data output (optional RS422 or RS485), without software, power supply and cabling



DMMK Small Digital-Meteo Multi Display for MWS-weather stations, dimensions without foot about 30 x 20 x 2.8 cm, with up to 12 simultaneous digital LED-displays (red, 7 segment), 4 positions, height of characters 13.2mm, RS232-interface, optional TCP/IP and WLAN, incl. AC-plug-in supply, for indoor use



RDR 485Y Precipitation Radar Sensor measures/records precipitation activity and intensity, 95 mm high. Power supply 8–30VDC, with RS232-data output (optional RS422 or RS485); without software, power supply and cabling



UVIS 485Y Ultraviolet Sensor for direct measurement of the UV-index from 0–12 (UV radiation intensity relevant to sunburn), erythral action spectrum. 65 mm high, diameter 25 mm. Power supply 6–30VDC, with RS232-data output (optional RS422 or RS485), without software, power supply and cabling



DKA1 Digital Meteo Display for MWS-weather stations, dimensions 6 x 14.5 x 5.5 cm, with 9 alternating digital LED-displays (red, 7 segment). A blinking parameter is the measured value. 4 positions, character height 13.2mm, without plug-in supply (can be supplied straight from the weather station), for indoor use



RMS 48Y5 Precipitation Sensor measures precipitation with a self-emptying bucket and a collector vessel with 200 cm², 170 mm high; Power supply 6–30 VDC, with RS232-data output (optional RS422 or RS485); without software, power supply and cabling



WKS 485Y Sensor for Detection of Cloudiness ascertains independent of sun or moon if there is a cloud layer. From the measured values the height of cloud base can be found. 63 mm high, diameter 25 mm. Power supply 6–30VDC, with RS232-data output (optional RS422 or RS485), without software, power supply and cabling

Some units are shown with options that are not standard equipment and will be charged. You will find detailed information on our homepage under <http://www.reinhardt-testsystem.de> All prices are valid in Germany and the European Union and are without taxes, transport and packing.

IE & OE – Specifications subject to change without prior notice.

10/2024